

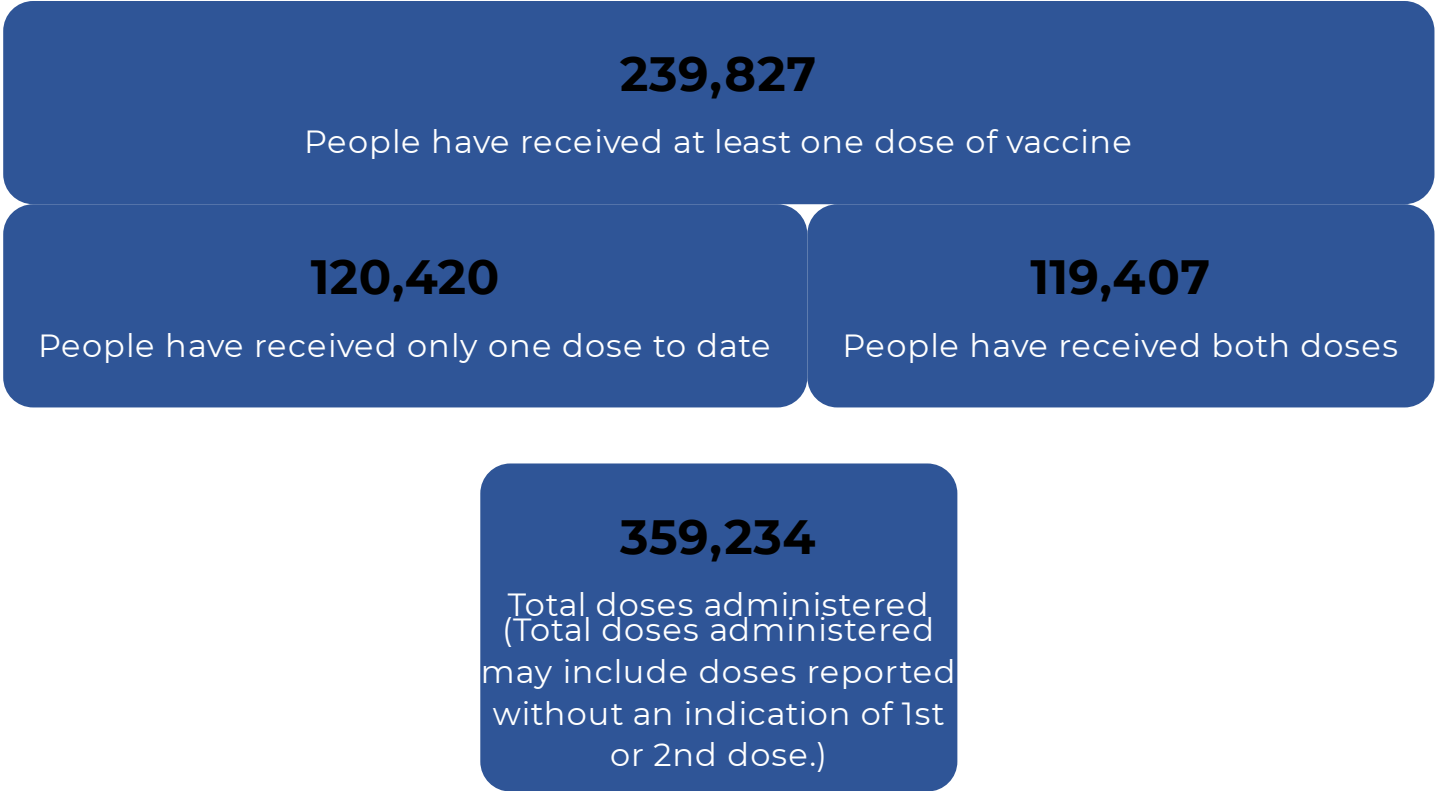
When and where to get your vaccination (<https://healthandwelfare.idaho.gov/covid-19-vaccination>)

New! Vaccine Administration Transparency Data* (https://public.tableau.com/profile/idaho.division.of.public.health#!/vizhome/provider_level_performance_vPublish/PROVIDER)

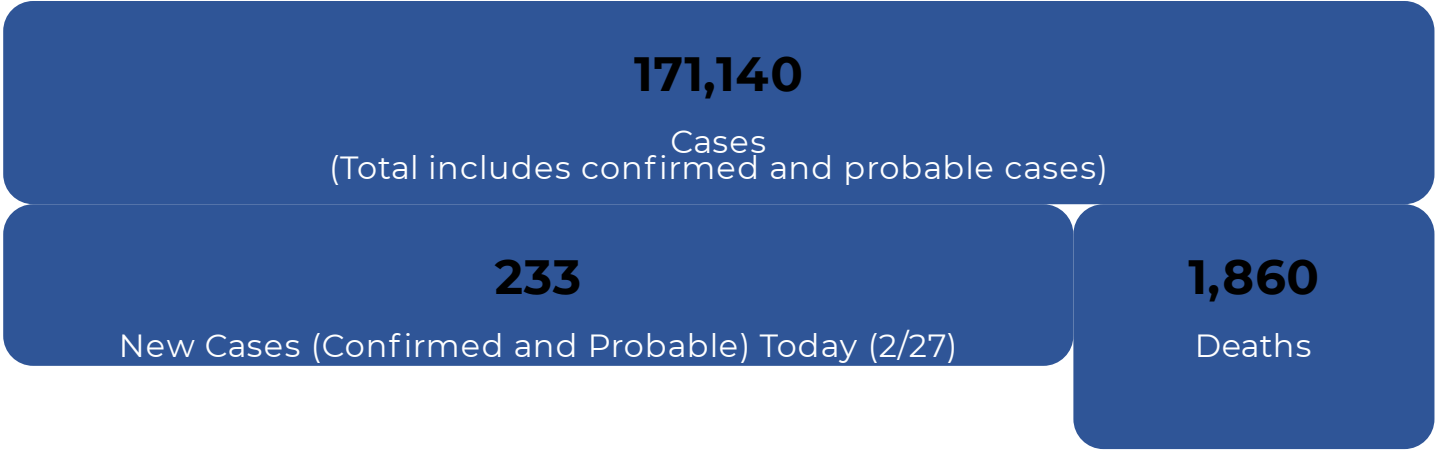
COVID-19 Vaccine Data Dashboard** (<https://public.tableau.com/profile/idaho.division.of.public.health#!/vizhome/COVID-19VaccineDataDashboard/Residence>)

*Vaccine Administration Transparency Data will be updated daily by 5 p.m.
**Vaccine data dashboard updated daily by 5pm with the exception of Sundays and holidays.

Vaccine Data At A Glance



COVID-19 Cases At A Glance




View the COVID-19 Case, Laboratory, and Hospital Data Dashboard (<https://public.tableau.com/profile/idaho.division.of.public.health#!/vizhome/DPHIdahoCOVID-19Dashboard/Home>)

State-level case, laboratory, and hospital data updated by 5:00 p.m. MT Monday through Saturday, excluding holidays, and are **current as of 2/27/2021**. Vaccine “Data at a Glance” updated by 5:00 p.m. MT Monday through Saturday, excluding holidays, and are **current as of 2/27/2021**. Case data are based on surveillance system records provided by the public health districts. Vaccine administration data are based on data contained in the Immunization Reminder Information System (IRIS). Public health district data will be updated on their agency website at their discretion and might differ from data presented here. **Data are preliminary and subject to change.**

Stage 3 Stay Healthy Guidelines (<https://rebound.idaho.gov/stage-3-stay-healthy-guidelines/>)

View **Rebound.Idaho.Gov** (<https://rebound.idaho.gov/>) for details on statewide Stage 3 Stay Healthy Guidelines
Governor's Actions (<https://coronavirus.idaho.gov/governors-actions/>)


View the COVID-19 Transmission Risk Levels Map (<https://arcg.is/1D4SPm1>)

According to the  **Idaho Back to School Framework** (<https://www.sde.idaho.gov/re-opening/files/Idaho-Back-to-School-Framework-October-2020.pdf>) posted at local public health districts, this color-coded map identifies category of transmission level within a community using scientifically driven metrics. This map shows the current evaluation by the local public health districts by county. Questions? Contact your **local public health district** (<https://coronavirus.idaho.gov/contact/>).

A REMINDER

To protect your family and friends, your community, vulnerable Idahoans, local businesses, and our students and teachers, please remember to:

- Keep at least six feet between you and others in public
- **Wear face coverings in public places** (<https://www.cdc.gov/coronavirus/2019-ncov/prevent-getting-sick/diy-cloth-face-coverings.html>)
- Stay home if you are sick
- Wash your hands often
- Cover coughs and sneezes
- Disinfect surfaces and objects regularly

 **Stressed by COVID-19?**
1-986-867-1073 (call or text)
1-866-947-5186 (toll free)
(<https://coronavirus.idaho.gov/wp-content/uploads/2020/08/COVID-HELP-Now-Line.pdf>)

ONE Idaho (<https://one.idaho.gov/>)

Idaho Rebounds:
Our Path to Prosperity
(<https://rebound.idaho.gov/>)

Upcoming Events

There are no upcoming events at this time.

View all Events (<https://coronavirus.idaho.gov/events/>)

Governor's Updates

- **New COVID-19 vaccine administration transparency data now live** (<https://gov.idaho.gov/pressrelease/new-covid-19-vaccine-administration-transparency-data-now-live/>) – 2/8/21
- **Idaho advances to Stage 3 as COVID-19 case counts, hospitalizations decline** (<https://gov.idaho.gov/pressrelease/idaho-advances-to-stage-3-as-covid-19-case-counts-hospitalizations-decline/>) – 2/2/21
- **MORE UPDATES** (<https://coronavirus.idaho.gov/governors-actions/>)

Latest Updates

Tweets by IdahoCOVID19 (https://twitter.com/IdahoCOVID19?ref_src=twsrc%5Etfw)